



# The Bugle



**A chance to blow your trumpet for the villagers of  
Alport, Middleton and Youlgrave**

**No. 258**

**September 2023**

## **Community group re-visits Ypres to exchange Centenary Memorial**

It's hard to believe that it is five years since we built the Youlgreave-Ypres Centenary Memorial and nearly 100 people travelled to Ypres for that memorable weekend. But last month, 23 of us visited Ypres once more to exchange the memorial 'halves'.

An early start and wet trip to Dover, but a calm ferry trip and sunshine for the rest of the visit. We stayed at the excellent Novotel Centrum Hotel again, so close to the impressive market square and amenities.

We combined excursions with time for independent exploration of the city, with its museum, churches, shops and rampart walks.

Saturday morning saw us

dismantle the St Martin's Cathedral half and assemble the All Saints' half in the Cathedral.

Thanks to those who helped with this and those in the audience, who thankfully didn't ask for an encore!

Five miles east of Ypres lies Tyne Cott Cemetery and Memorial, with its informative and moving visitor centre. The immaculate and architectural Wall of Remembrance (34,936 names, including local soldiers John Stevenson and Willie Evans) and the 11,940

white headstones.

The visiting Canadian Band from Nova Scotia was an added bonus, plus the view back to



*The Centenary Memorial*

*Continued on page 4*

**Want to lose weight but  
pressed for time?  
I have helped hundreds of dieters  
reach their target, and  
I can help you too.**

- **Weekly 1:1 appointments in the  
comfort of your own home.**
- **Super easy flexible steps**
- **Medically backed**
- **Established 40 years**

**4 week  
Special Offer**



**Carol**  
**07546 193233**

[www.one2onediet.com/CarolT](http://www.one2onediet.com/CarolT)



**POPPIES<sup>®</sup>**  
CLEANING SERVICE

- REGULAR HOME CLEANING
- INDEPENDENT LIVING ASSISTANCE
- SECOND HOME CLEANING
- SPRING & DEEP CLEANING
- LAUNDRY & IRONING
- TEMPORARY HELP

01246 583 800  
peakdistrict@poppies.co.uk

Local, Professional, Fully Insured, cleaning the  
Peaks & Derbyshire since 1997.



**tonic**  
HOLISTIC

YOULGRAVE & SURROUNDING AREAS

SUPPORTING THE HEALTH & WELL-BEING OF WOMEN AND  
CHILDREN IN THE PEAK DISTRICT THROUGH REFLEXOLOGY

HOME VISITS AVAILABLE

WWW.TONICHOLISTIC.CO.UK  
TONICHOLISTIC@EMAIL.COM  
CHARLOTTE 07377 181341



[www.facebook.com/tonicholistic](http://www.facebook.com/tonicholistic)



**Bakery – Cafe – Kitchen**  
[www.peakfeast.co.uk](http://www.peakfeast.co.uk)  
**Moor Lane, Youlgrave DE45 1US**  
**01629 630000**



- Supply & Fitting of all Domestic and Contract Carpets
- Supply & Fitting of Vinyl, Laminate & Karndean Flooring
- Supply & Fitting of Real Wood Flooring
- Supply & Fitting of Sisal and Natural floorings



- ❖ Guaranteed Workmanship
- ❖ Free Fitting Service
- ❖ Free Home Selection Service
- ❖ Moving & Replacement of Furniture
- ❖ Disposal of Old Carpet
- ❖ Customers' Own Car Park



**43/47 High Street, Clay Cross, Chesterfield**  
**Tel: 01246 863148**



See our **WEBSITE** at: [www.nutt.co.uk](http://www.nutt.co.uk)

*Ypres re-visited – continued from front page*

Ypres, now green and productive farmland – once the scene of so much devastation and loss.

The Menin Gate (24,588 casualty names, including Willie Wragg) and still the Last Post Association holding its Act of Remembrance at 8pm as it has every evening since 2nd July 1928 (apart from during World War 2). We had arranged to lay two wreaths, one for the Community Group by Sandy and Mike Read and one for the Youlgreave British Legion laid by Gordon Coupe and Ian Bright. To our surprise and delight, Gordon was asked to read the Kohima Epitaph in front of the crowds. Brilliant Gordon, what an honour and such an emotional moment for us all.

Sunday afternoon was spent visiting Lijssenthoek Military Cemetery, the site of a Field Hospital. Another moving and well-maintained cemetery with 10,783 graves of many nationalities.

Then onto Poperinge and Talbot House (ToCH) for refreshments and time for the museum and the well-preserved house of comfort and solace to so many soldiers a century ago. The Chapel on the top floor (accessed by all of our party) is so moving.

We spent Sunday evening enjoying the cafes and then all too soon it was Monday and time to return.

A big thank you to all those who helped beforehand and during the trip and to all at Slacks Coaches for making it so successful.

The Youlgreave 1914-1918  
Community Group



*Gordon Coupe was asked to read the Kohima Epitaph (photo by Jean Stacey)..*





YOULGRAVE VILLAGE HALL PRESENTS

# TRAVIS LOGAN

Live country music star!!



Saturday 2nd September, 7:30pm Village Hall



£10 per ticket. Available from the Post Office or Village Shop or on the door. Bring your own drinks and glasses.



Guaranteed a foot tapping sing  
along evening!

Cowboy hats & boots optional



**SUPPORT YOUR VILLAGE HALL**



## VILLAGE NOTICEBOARD

### MOBILE LIBRARY

**Friday 1st September**

**Friday 29th September**

**Friday 27th October**

- 3.15–3.35pm Holywell Lane, Youlgrave
- 3.40–4pm Grove Place, Youlgrave

Further information 01629 533444  
[www.derbyshire.gov.uk/libraries](http://www.derbyshire.gov.uk/libraries)

### Youlgrave Surgery opening times

Monday	8.30am-12 midday 2-6pm
Tuesday	8.30am-1pm
Wednesday	8.30am-1pm
Thursday	8.30am-12 midday 2-6pm
Friday	8.30am-1pm
Weekend	closed
Tel 01629 636207	



*A warm welcome*



### COFFEE MORNINGS

*Drop in for a chat, fun and  
friendship*

10am–12 noon

Wesleyan Reform Chapel

1st and 3rd Wednesday every  
month.

Homemade cakes, tea & coffee,  
optional activities

## Soup and Sweet



offers a very  
warm welcome  
to everyone  
in the

**Reading Room**

**12 noon till 2ish**

**2nd and 4th Mondays**

Join us for chat, a  
bit of fun, tasty  
soup, and pud  
with custard (or  
not). Costs £3.50



Phone 636601 or 636477  
to discuss



Andrew McCloy (Editor), Englemere, Brookleton,  
Youlgrave, Derbyshire DE45 1UT tel 01629 636125  
email [bugleEd01@gmail.com](mailto:bugleEd01@gmail.com)

Printed by Matlock Print, Mercury House, 24 Bakewell Road, Matlock, Derbyshire  
DE4 3AU (tel 01629 582766) [www.matlockprint.co.uk](http://www.matlockprint.co.uk).

*The views in this publication are not necessarily those of the editorial team.*

*Youlgrave Village Hall*

**PANTOMIME AUDITIONS**

*Sunday 17th September, 2.30pm*  
**Chorus**, children must be 8 years old

*Monday 18th September*  
**Main cast** auditions, 7pm

**DOMESTIC HELP REQUIRED**

4 hours per week

Pay negotiable depending upon  
experience.

Apply Gill Pickworth

07931 323194

**Youlgrave Village Hall**  
(Charity No 520538)

**AUTUMN CRAFT  
ATTIC SALE**

**Saturday 16th September**

**10am – 1pm**

To book a table call  
Judith on 10629 636492

£8 per table

Free entry

Refreshments available

**PETE CASTLE**

**An Evening of Story and Song**

Friday 15th September at 7.30pm,

Tickets £10

Join us at Fountain View Bakery for an evening  
with Pete Castle, a Derbyshire-based folk singer  
and storyteller.

Pete will be blending traditional tunes with folk  
tales from around the British Isles. Tickets include  
a buffet of freshly-baked treats and we'll be  
serving a range of drinks from the bar. All  
welcome.

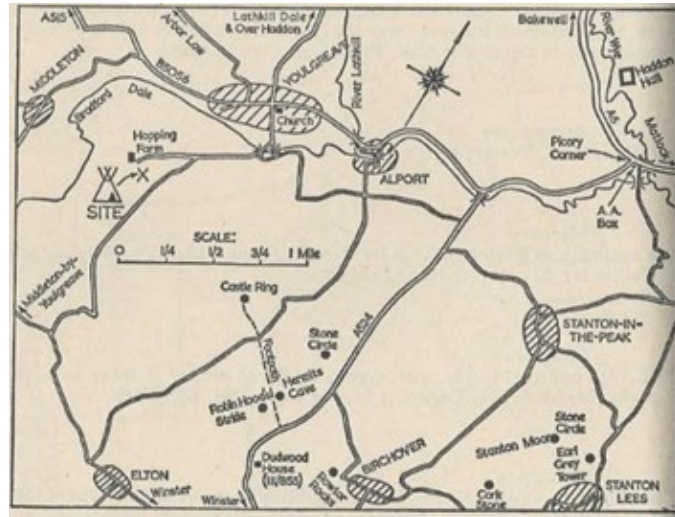
Please purchase tickets in advance from Fountain  
View Bakery or email  
[fountainviewbooks@gmail.com](mailto:fountainviewbooks@gmail.com)



## Camping and Caravanning Club Site, Hopping Lane – a short history

The campsite has a long history of holding Meets, and in 1934 Sheffield District Association (DA), which was formed the same year, held its first District Association Meet on site at Hopping Farm. The DA was led by A.W. Snowden, who it's believed had a strong association with the site – the campsite was originally named and referred to as the "A.W. Snowden Memorial Site", no doubt testament to his hard work in setting up the site for the enjoyment of camping and caravanning club members.

The Camping and Caravanning Club purchased the land in 1968 and for the first two years it was used exclusively



by Club members for District Association Meets and Rallies. Then, from 1970 onwards, the campsite was promoted to all campers and over time has evolved into the campsite we all know today – Bakewell Camping and Caravanning Club Site.

A typical agenda at Caravan and Camping Club District Association. Meets would be family parties in a marquee with puppet shows put on by club members, followed by talent competitions which were open to all comers. After this there was a community sing along and probably a few beers; and on Sunday mornings a church service.

The good old days!







# WE ARE HIRING

## Key Responsibilities

- Exceptional care & support to clients
- Personal care, Meal preparation, Medication
- Promote independence and dignity
- Maintain records and documentation
- Communicate effectively

## Benefits

- Full-time and part-time positions
- Competitive pay rates
- Extensive training
- Opportunities for career advancement
- Paid time off and holiday benefits
- Mileage reimbursement (TAX FREE)

## Feel Like This Is you?

- Genuine passion for care & support
- Excellent communication skills
- Ability to work independently & collaboratively
- Flexible & adaptable



 [enquiries@daisychainhomecare.com](mailto:enquiries@daisychainhomecare.com)

 01629 735100

 <https://www.daisychainhomecare.com>

## Traffic and congestion in Youlgrave:

By Cllr Anne Blenkinsopp (on behalf of Youlgrave Parish Council)

Problems related to traffic and congestion in Youlgrave are not new. The published results of a February 2018 survey carried out by Youlgrave Parish Council (YPC) revealed that the top three priority issues of concern to residents were:

- Pedestrian safety;
- Obstructive parking; and
- Illegal lorry movements.

A lack of pavements increases vulnerability of pedestrians, and whilst parked vehicles do reduce the speed of traffic through the village, they also reduce visibility for all road users. Inconsiderate parking frequently obstructs and creates bottlenecks on our roads.

Derbyshire County Council (DCC) are responsible for highways policy and its enforcement – through Traffic Regulation Orders (TROs), as well as the provision and maintenance of our infrastructure. Planning is the responsibility of the Peak District National Park Authority (PDNPA).

As a follow up to the survey,



Youlgrave Parish Council conducted a walkabout around the village with officials from both agencies in April 2018 to highlight and discuss the issues of concern, and to identify and agree a series of follow up actions to remedy them. A number of these actions have been successfully implemented, including: a re-lining of the pedestrian pathways; a bollard next to the Stone Masons Cottage opposite the Garage (to protect vulnerable users exiting the school and Scout Hall, in particular); a dropped kerb opposite the Alport Lane Playing Fields (ALPF) to prevent parking and aid safer pedestrian crossing; attention to the bus stops opposite New Road and on Grove Place; amended white lining aiming to remedy obstructive parking at key locations, such as Church Corner; improved signage related to weight limits through the village at Long Rake Spar, on the A6, and at Hawley's Bridge. Several residents have undertaken Community Speed Watch Training, and equipment has been procured with the help of the Parish Council.



## past, present and future?

Happily, the improved weight limit signage and increased reporting of offenders has largely worked. Today we experience far fewer illegal lorry movements through the village. However, it is evident from recent village meetings that whilst progress has been made, pedestrian safety and parking remain of concern to residents, and more needs to be done.

### So where do we go from here?

YPC understands from DCC that the unsuccessful re-surfacing work will be remedied, also that the extension to the 30mph speed restrictions on the entrances to the village (which were discussed in 2019) will be progressed during 2023. DCC has also indicated that VAS (vehicle activated speed signage) could be deployed in the village. The recent public meeting demonstrated clear support for a 20mph speed restriction. However, DCC expressed their reluctance to action a 20mph TRO, pending the evaluation of current pilots in Buxton and Long Eaton. YPC will discuss this with DCC.

The Parish Council would also like to explore and discuss interest in the implementation of a residents' parking scheme. Paid permit parking schemes already operate in Bakewell. A £35 annual permit payment covers the cost of administration and enforcement. To implement such a scheme we would need substantial village support, evidenced through a household survey. YPC will organise a meeting this autumn to discuss this proposal, with details to follow in the next Bugle.

In the meantime, we can:

1. Walk rather than drive within the

village when possible, wear bright clothes, and carry a torch at night;

2. Support the 20's Plenty Campaign by use of stickers and signage;
3. Use off-road parking spaces or our car parks;
4. If you have additional off-road parking capacity could you rent a space to a neighbour?
5. If you own or manage holiday accommodation without parking spaces, please encourage your visitors to drop off and unload and then park in the village car parks;
6. Volunteer to help with community speed watch (please contact YPC);
7. If you are a landowner and would consider renting or selling a piece of land which could be used for parking, please make Youlgrave Parish Clerk Matthew Lovell aware of that, tel 01629 636151, email [youlgraveclerk@youlgrave.org.uk](mailto:youlgraveclerk@youlgrave.org.uk).

Let's work together to ensure that Youlgrave remains an attractive and safe place to live, work and visit.



*The results of the 2018 traffic survey and consultation carried out by the Parish Council can be found in the Parish Council section of the village website, [www.youlgrave.org.uk](http://www.youlgrave.org.uk).*

## Traffic and speeding in Youlgreave: report of a meeting held in July

*By Anne Cooper on behalf of Youlgreave People's Assembly*

There was a very well attended public meeting on 20th July to discuss the issue of traffic speeding in Youlgreave. Almost 60 people attended, including Cllr Simon Spencer, Cllr Laura Mellstrom, Ben Morris (Police Community Support Officer) accompanied by a Special Constable. Sarah Dines MP had been invited but declined to respond.

The main point raised was the '20's Plenty' scheme, which is being rolled out in many places and is clearly supported by Laura Mellstrom, our newly elected District Councillor for the Green Party.

Simon Spencer was politically against the 20's Plenty proposal, although he indicated that it could be considered around the immediate area of the school.

Pedestrian safety is a big concern, bearing in mind the speed of vehicles and cyclists, the latter and to some degree electric vehicles, because they can approach so quietly.

The status of the painted pedestrian footpath was also questioned, especially with a view to the increased traffic through and into the village over the last 10 years or so.

Simon Spencer indicated that Light Up Slow Down advisory signs could be investigated by the Parish Council. They are supplied as portable so that they can be moved to different entrance roads and are helpful in

changing the culture regarding what speed is acceptable.

Ben Morris (PCSO) gave an update from the Police viewpoint: There is one PC and a PCSO to cover 52 villages over an area ranging from Matlock to Sudbury to Hathersage. The number of Road Traffic Incidents reported to the Police was two in the last six months. There was an audible gasp at this figure as people present could evidence how difficult it is to report road traffic incidents. However, Ben was very helpful in agreeing to look at places where some parking restrictions might help, e.g. Bradford Road. He also engaged with several people to discuss individual problems after the meeting.

There was also concern about the width restrictions, especially where there is on-road parking and where wide loads, etc, impact on pedestrian safety or cause obstruction.

A detailed report had been submitted by Ian Knight concerning Community Speed Watch (CSW). Two live exercises had been undertaken, one on Conksbury Lane and one on Alport Lane. The assessment to date is that these are the only two viable locations in which Community Speed Watch can be deployed in Youlgreave, owing to the strict criteria imposed by Derbyshire Constabulary, in particular:





- All sites must be sited on a pavement, grass verge or similar area off of the carriageway with a clear line of sight for at least 50m and preferably 100m to oncoming traffic.
- Operators and Speed Indicating Devices should not be closer than 3 feet from the edge of the road.
- The pavement must not be blocked and cause inconvenience to pedestrians.
- CSW signs must be placed both sides of the detection devices - so clearly visible to alert drivers.
- Operators must be clearly visible.

Given these restrictions, even those two locations are borderline, and that assumes the two roads are almost totally free of parked cars.

In addition, CSW is educational rather than enforcement, and to be reported which would prompt the issue of a Derbyshire Constabulary letter, the offending vehicle has to be exceeding 35mph (i.e. recorded at 36mph): APCO guidelines = Speed Limit (30) + 10% (3) + 2.

During the two exercises carried out, each assessing 100 vehicles, 0 were recorded on Conksbury Lane and 1 on Alport Lane.

The number of cars parked along the roadsides hampers visibility for people coming out of driveways/properties. On-road parking outside holiday cottages take spaces from residents who also then have to park on the roadside. They also narrow the road preventing access for emergency vehicles in some places and tractors

from working in others.

Simon Spencer pointed out that for a full consultation on Residents' Parking there had to be 85% of residents in favour and any action identified would, of course, need to be paid for, policed and implemented.

Laura Mellstrom responded that she was eager to work with the Parish Council where she could be of help.

Many of those attending were unaware that they can attend Parish Council Meetings to express their views. We have asked for clarification from Parish Clerk Matthew Lovell and are able to confirm that people are welcome to attend the PC meetings to express their views. A 15 minute time slot is allotted at the beginning of each meeting to allow for this.



#### Recommendations:

- Photograph and/or record incidents of concern so that they can be reported appropriately
- Re-establish Community Speedwatch Group with Ben's help
- Investigate Light Up Slow Down Signs
- Research and campaign '20's Plenty' – a show of hands at the meeting indicated overwhelming support for this action
- Engage in processes with and through the Parish Council





## From the Churches

I make no apology for another piece centring on the Ypres Memorial Trip – originally conceived under the auspices of the Church of England, this led to an amazing community effort with a lasting impact, as demonstrated by the other half, collected last week from Ypres Cathedral and now standing in the Chancel of our own church.

Other aspects of our trip have been described elsewhere, but this project has brought together so many of our community members, not just on the trip but in the creation of this memorial piece.

We think of everyone who has played a part in the team which created this memorial of two halves – from the original concept and the children's designs; to those who helped raise funds and those who gave countless hours of their time and talents to bring it to fruition.

We have seen how many different skills, talents and materials come together to make a glorious whole and how each depends on the other, is



incomplete of itself. Enable us to reflect how this relates to our faith and how we live it.

We pray that our unique link with the people of Ypres will continue over the



*A few moments of quiet contemplation on last month's Ypres memorial trip.*

years to come and always be celebrated as the joining of our two places – forever linked through sacrifice.

Last Sunday afternoon at Talbot House (ToCH) Richard Tucker led a short period of reflection – asking people what they most remembered of our short time away or felt had the most impact on them – then concentrating on the future and what it may hold as the world gets to grips with major issues which might lead to conflict; such as more equal sharing of resources and habitable places to live.

In the prayers we pledged to strive for all that makes for peace, to heal the wounds of war and to work for a just future for all humanity and with the help of God we will.

The Ypres Half of the Memorial will be welcomed back to Youlgreave at the Family Service on Sunday 17th September at 11am – everybody welcome.

Anne Cooper

## Services for September

### Sunday 3rd September

11 am Morning Prayer  
6.45pm Middleton Evening Prayer

### Sunday 10th September

11 am Holy Communion – Visit of Bishop Malcolm

### Sunday 17th September

11 am Family service – Ypres memorial

### Sunday 24th September

11 am Holy Communion for Youlgrave group of parishes

### Sunday 1st October

11 am Harvest Family Service  
6.45pm Middleton Evening Prayer

*For services at other churches:*

*Methodist contact Margaret 636558*

*Wesleyan Reform contact Isobel 636251*

## CHURCH CONTACT POINTS

Priest-in-Charge: **Revd Adele Barker**

The New Vicarage, Conksbury Lane,  
Youlgrave DE45 1WR 01629 630409  
revdadele@gmail.com  
(Rest Day: Friday)

### **Wardens:**

Andrew Parker, 01629 636757,  
andrewparker10@yahoo.co.uk  
(general enquiries, funerals)

Brenda Harrop, 01629 636638

**Weddings:** Denise Figg, 01629  
636526, denisefigg.wed@gmail.com

*Retired clergy:*

**Revd Geoff Clay** 07833 252803 &  
01629 geoffclay@me.com 636591

**Revd Jane Clay** 07802 630877  
Ejaneclay@icloud.com

**Revd Richard Tucker** 01629 636074  
rev.richardtucker@gmail.com

---

## Town Hall update from Derbyshire Dales District Councillor, Laura Mellstrom

The new Progressive Alliance is moving forward on a number of projects, some of which came up for discussion at the Full Council meeting on 27 July 2023.

### **Clean & Green Review**

The District Council's "Clean & Green" Team is responsible for grass cutting, road sweeping and maintenance of parks, graveyards and public spaces. Service frequencies have been reviewed, in order to make their workloads more achievable and to improve efficiency. The key changes are:

- Cutting of verges – down from 9 times per year to 6, with further cuts only where there are safety issues.
- Grass cutting in parks, sports fields and churchyards to remain unchanged, but open cemeteries will be cut 12 times per year, up from 6.



*Continued next page*

*Continued from previous page– District Councillor's report*

- As before, there will be 2 pavements sweeps, 2 road sweeps and 1 leaf clearance per year. Previously additional visits were often accommodated on request, but this places a significant drain on resources as they only have 2 sweepers for the whole district. In future, there will be 4 inspections per year, with additional sweeps only where safety requires.

It may be possible for additional work to be done on a paid basis, if Parish Councils are willing to stump up. The new mowing and cleaning schedules will be published on the Council's website soon, with a facility to report missed bits. The Council remains committed to avoiding glyphosate use, despite the much longer times it takes to remove weeds manually. They have been trialling the use of a pesticide-free "hot foam" system in Eyam and we should hear more about that in September.

### **New bin days start 18th September**

It's all change with the bins, as well. Waste collection is done by Serco as contractors. The routes they use have been reviewed to make the service more efficient and reduce CO2 emissions. This means about 90% of households will find their bin day changes. Details will be confirmed in the week commencing 4 September, to start from the 18<sup>th</sup>. There will be leaflets, as well as information on the Council's website and Facebook etc.

Significant disruption is expected at first, but this has been planned for with extra crews laid on to deal with missed collections, which can be reported on the website or by phone to: 01629 761122. More information is available at <https://www.derbyshiredales.gov.uk/bins-and-recycling/waste-changes-faqs>

### **Anyone need a HUG?**

The Council has nearly £2m from the Government to spend on Home Upgrade Grants to home owners and private renters on a low income (under £31,000 per household), who don't have mains gas, and have an energy rating of D or worse. (They can fund an Energy Performance Certificate if you don't know what your energy rating is.) The grants pay for energy efficiency measures and low carbon heating, to reduce fuel bills and CO2 emissions. If eligible, you are not required to contribute yourself.

The grants are being administered through Marches Energy Agency. For more information call 0800 677 1332 (option 2) or email [hugd@mea.org.uk](mailto:hugd@mea.org.uk). If you would like to chat in person, please pop in to see me at one of the following:

- Saturday 19th August, 12 noon–1pm: The Flying Childers Inn, Stanton in Peak DE4 2LW
- **Thursday 12th October, 10–11am: Fountain View Bakery, Fountain Square, Youlgrave DE45 1UR**

If you would prefer a private conversation, I am happy to set up a Zoom call or give you a ring. You can contact me at [Laura.Mellstrom@derbyshiredales.gov.uk](mailto:Laura.Mellstrom@derbyshiredales.gov.uk) c/o Town Hall, Matlock DE4 3NN, or call me on 07503 674335.



## **Youlgrave Wildlife Notes: July & August**

Two months can be a long time in wildlife. Our swifts, which have had quite a good summer, have now left. A number of old nest sites were used, some new ones found and some old sites abandoned. Last dates are always difficult, but probably around 10th August. You think they've gone and you spot another one, quite possible in transit. The swifts in the sky seem to have been replaced by a lot of house martins and swallows. I didn't think they had done well this year, but there were plenty about at the end of August.

Redstarts, particularly near the New Dam, seem to have had a good summer with plenty of sightings. A heron seems to have taken up residence by the New Dam. A spotted flycatcher in a garden up at Coldwell End and a tree creeper in a lounge down Holywell Lane were two of our less often seen birds, along with whitethroat, jay, nuthatch and bullfinch. Mandarin ducks have often been seen on the river and the New Dam. A kingfisher was seen near Alport and a dabchick higher up the river.

Birds of prey have been widely reported. Kites have been seen on a number of occasions and buzzards have been quite common. The young particularly can be very noisy and peregrines too are often heard before they are seen. Kestrels can be seen near the New Dam and sparrowhawks have visited gardens, often at very high speed.

Smooth newts seem to be able to find garden ponds a long way from any others and a great crested newt was reported from Brookleton. Recent butterfly sightings have included small copper, gatekeeper, comma, large white, some very tatty meadow browns and some mint condition red admirals. Grasshoppers seem to be fairly common at the moment. I saw lots at Icky Picky



*Paired damselflies.*

and Braemar Lane. There were lots of the little damsel fly dragonflies laying their eggs in our pond earlier in the year. Recently I have seen several of the big southern hawkers dragonflies including some trying to lay their eggs. The females seem to try and lay everywhere but in the water. A fox strolled through a garden down New Road.

On my monthly flower survey on 23rd August I found 73 species in flower. I found 73 in June, too, but the actual species recorded slowly change over the summer. Earlier in the summer our carrot family flowers, Umbellifers, are the big ones like cow parsley and sweet cicely. Now we have the more delicate upright hedge parsley and burnet saxifrage. Other highlights were field and devils bit scabious, spring sandwort and harebells in the drier areas and water mint, water forget me not, great willowherb and still some water cress and brooklime along the river.

My thanks to all my contributors to this article, Pat, Simon, Keith, John, Ian, Lisa, Gill, Richard, Edwina, Geoff, Maggie and Cath.

Ian Weatherley  
email 48iweatherley@gmail.com

## Granby House, Youlgrave

**Do you feel the need for more company or support, but don't want a care home? Or do you have an elderly relative who wants to be closer to you? Granby House could be the answer.**



Granby House has successfully managed lockdown without any residents or staff getting COVID. All residents are vaccinated and we are welcoming new residents.

At Granby House you can eat meals cooked by the staff, and visits from carers can be arranged if you need extra help. But Granby House is not a Care Home.

If you or a relative would like to consider Granby House please contact Pat Cleaver on 01629 636836 or email [granbyhouse@gmail.com](mailto:granbyhouse@gmail.com). We can then tell you more about Granby House, and arrange a visit and a trial.



Need help or advice?

**Sarah Dines**  
Member of Parliament  
for Derbyshire Dales

You can write to me any time on:  
[sarah.dines.mp@parliament.uk](mailto:sarah.dines.mp@parliament.uk)

✉ Sarah Dines MP, House of  
Commons, London, SW1A 0AA

☎ 020 7219 1751

My website and social media  
carry useful information about  
my local campaigns, events and  
frequent answers to questions.



[www.sarahdines.org.uk](http://www.sarahdines.org.uk)



@Dines4DerbyshireDales



@Dines4Dales



@DinesForDales



**Youlgrave Garage Ltd**

Friendly Honest Reliable

**Tel. 01629 636943**

Service & Repairs  
Air Conditioning  
Exhausts

MOT Testing  
Batteries  
Car sales

Diagnostics  
Brakes & tyres  
Accident Repair

E5 Super Unleaded Petrol & Diesel

Custom leather and interior service

Shop open for sale of ice creams, hot and cold drinks,  
confectionery and car accessories

**www.youlgravegarage.co.uk Email: youlgravegarage@gmail.com**

## **BAKEWELL OSTEOPATHY CLINIC**

The conditions we can help you with include:

- **HEADACHES & MIGRAINES**
- **NECK PAIN & WHIPLASH**
- **FROZEN OR STIFF SHOULDERS**
- **TENNIS ELBOW • SLIPPED DISCS**
- **REPETITIVE STRAIN INJURIES**
- **TRAPPED NERVES • LOWER BACK PAIN**
- **HIP, THIGH OR KNEE PROBLEMS**
- **POSTURAL CHANGES DURING PREGNANCY**
- **CHRONIC FATIGUE SYNDROME (ME)**

**The clinic offers the following therapies:**

### **OSTEOPATHY**

is an effective way of treating all joint and soft tissue related problems from head to toe in people of all ages

### **SHOCKWAVE THERAPY**

which is an advanced non-surgical and non-invasive treatment for a wide range of stubborn tendon related issues such as Plantar Fasciitis, Shoulder tendons or Tennis or Golfer's Elbow

### **IDD THERAPY**

for degenerative discs or spinal joints which cause long term chronic pain and herniated or prolapsed or bulging discs that cause debilitating nerve pain such as sciatica.

### **LAZER THERAPY**

is a new technique for wound healing and osteoarthritis.

### **CLINIC HOURS AND HOME VISTS:**

The Bakewell Osteopathy Clinic is open each week day from 9.00am to 6.30pm (except Wednesdays) and every other Saturday from 9.00am to 2.00pm. We can also arrange home visits by special request.



**BAKEWELL  
OSTEOPATHY  
CLINIC**

**www.bakewellosteopathy.co.uk**

**CALL PHIL HELER:**

**01629 329009 | 07980 930755**

**7B Buxton Road, Bakewell, DE45 1DA**

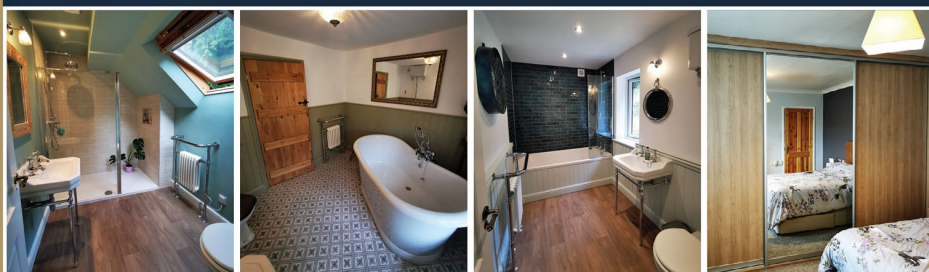
# GOODWINS

## KITCHENS BEDROOMS & BATHROOMS



**DESIGN, SUPPLY AND PROJECT  
MANAGED INSTALLATIONS OF KITCHENS,  
BEDROOMS AND BATHROOMS.**

**WE TAKE CARE OF EVERY ASPECT FROM START TO  
FINISH, TO MAKE YOUR DREAM ROOM A REALITY.**



**LIKE US ON FACEBOOK  
FOLLOW US ON INSTAGRAM**



**PHONE: 01629 258 500  
EMAIL: [michael@goodwinskbb.co.uk](mailto:michael@goodwinskbb.co.uk)  
WEB: [www.goodwinskbb.co.uk](http://www.goodwinskbb.co.uk)**

**2 ST JOHNS STREET, WIRKSWORTH,  
DERBYSHIRE, DE4 4DR**



## BAKEWELL PET SUPPLIES



**Tel: 01629 814264**

## David Kenworthy – Joiner

All types of joinery work undertaken

### FREE QUOTATIONS

- Glazing
- Doors & windows
- Garden Decking
- Flooring
- Purpose made joinery
- Fitted Kitchens
- Fitted
- Any General Home Maintenance Work, no job to small

Rose House, Youlgrave, Derbyshire  
DE45 1UT

Call David: 01629 636574

Mobile 07791 185536



Call Dan on 07525 022628

Email: drb\_125@hotmail.com



DRB.GeneralServices

Small Building Projects/Renovations/House Clearance

Pointing/Re-Pointing

Garden Maintenance & Clearance & Lawn

Mowing

Gutter Replacement, Repair & Cleaning

Jet Washing

Painting, Decorating & Tiling

General Handyman Services

No job too small. Fully Insured.



## Church Farm Diary, September

July has been a very frustrating month with all the rain we have had, making it a long drawn out silaging time. I think it rained most days, if not part of the day. Silage can be harvested when the weather is damp, but it is the ground that is wet, making it damaging to the fields with the implements travelling on the fields. Of course, hay making is completely different, needing drying winds and sunshine. Fortunately the weather was good in June for any hay that was got in.

Farming relies so much on the weather. The arable farmers with their crops of wheat and corn are having to dry out the harvest, because if they don't the corn, etc, will go mouldy with the damp weather and they will not be able to sell their crops. This of course means using electricity in the dryers and so therefore putting up the cost.

On a happier note the fruit trees seem to have plenty on them ready to pick when ripened.

In the *Farmers Guardian* I read that British dairy farmers are feeling undervalued as retailers and processors looked to imports, with milk prices dropping below 34ppl on UK produced milk with a move to imported products. Imported milk from overseas is having a direct impact on customers who are getting a poor standard of produce.

Is not just unsustainable for dairy farmers to run their business when cost pressures are going up and the price of milk is going down. Retailers and processors are not valuing UK produce in favour of imports; it is a volatile market at the moment leaving farmers vulnerable.

When I was milking my herd and retailing my milk round, things were very different with the help from the Milk Board, but when that was disbanded and different companies took over it was a race to get to the one that paid most for your milk and all these companies have a different price to offer you.

I went to Buxton with the W.I. on an 'Experience Buxton' trip and we are told of a Buxton Pudding. I had not heard of one before so looked it up. This is the recipe – nice but not as good as Bakewell Pudding!

**Marjorie Shimwell**

### **Recipe of the month: Buxton Pudding**

#### Ingredients

##### Pastry

200g plain flour  
2 tbsp caster sugar  
125g unsalted butter cubed  
1 egg yolk  
2 tbsp cold water

##### For the filling

150g unsalted butter at room temp  
150g caster sugar  
150g stale white bread,  
approx 4 slices  
3 medium eggs  
7 tbsp raspberry jam

#### Method

Bake the pastry blind for 15 mins with baking paper filled with baking beans, remove the beans and bake for a further 10 mins.

Blitz the bread in a food processor. Beat in the butter, sugar in a bowl with an electric mixer until smooth & fluffy, (about 5 mins).

Add the eggs beating until combined.

Fold in the breadcrumbs.

Spread raspberry jam over the pastry case, then spoon over the mixture, covering the jam.

Bake at 160c for 35-40 mins or until the sponge is nicely golden brown.

Serve warm with custard or cream of your choice.



## **Make and Mend: giving your broken or worn out items a second (or third!) lease of life**

Well, the summer holidays have come and now are well nigh over. I hope everyone has managed to enjoy themselves and made the best of whatever good weather we experienced. I should imagine that over the break we've all managed to break some of our useful gadgets, tools or possessions and are considering how to deal with them. So the answer is here!

Make and Mend will resume activities on a weekly basis commencing on Monday 18th September. We meet at 7pm for a couple of hours (or for as long as it takes, usually) in the Harold Lowe workshop below the Village Hall. You come into the hall through the Social room and go down the steps near the kitchen if you're not sure where that is.

If you just want to drop in for a chat and advice about a repair that's fine, but if you bring the problem with you we can usually set about making a start with you straight away.

If you participated in last season's sessions you will already know how it works and Peter and I would love to see you again.

If you didn't, the idea of our workshops is to help you to repair your broken or worn out items to give them a second, third or even greater lease of life. We will be there to advise how best repairs might be made and provide the resources and tools necessary to do so if we possibly can.



*Continued next page*

*Continued from previous page*

If you want to bring something down to us that you think might be a bit out of the ordinary please let Peter Cork (636887) or myself, Jeremy Hewitt (636580) know so that we can get the right resources ready before you come.

We love a challenge!

In the last sessions we saw vintage gearboxes, chairs, miniature furniture, upholstery projects, lamp repairs, toasters, radios, hi-fi, vacuums, fireguards and many more items. We had a very high success rate.

One thing we would love to enhance would be the Make aspect. Craft projects for the home in wood, metal or other materials perhaps; gifts for family and friends? Perhaps a gadget you've always wanted to create for your hobbies or a storage system for your collections? Leaded and stained glasswork is also available because since the Ypres memorial project was undertaken there is now glass cutting and leading equipment in the workshop, including for Tiffany style foiled glass work for lampshades and so on.

Peter and I both look forward to seeing you and your projects in the forthcoming weeks.

*Jeremy Hewitt*



## **Youlgrave W.I. report**

A tuneful start to the Summer began with the Entertainment Night at The Wesleyan. A delightful posy of songs from the WI Choir, performances from the Recorder Consort, superb poetry readings, and an abundance of cakes rounded off a successful evening.

Our Dabble Day on July 8th was, as expected, another big success. Our leaders for nature walking, belly dancing, African drumming, Raku pottery, painting, and mosaics helped us to produce great results and a happy atmosphere was created as we munched together at half time. Christine Gregory gave a wonderful morning talk on our local environment and wildlife, with superb slides



*A leisurely pace on the Chesterfield Canal.*





*W.I. members exploring Buxton.*

particularly on the habits and curiosities of hares.

July Supper Club was as always a tasty event, this time with wonderful curries and dreamy fruity ice creams. September 28th is the next one.

Another feast, on the Chesterfield Canal, came in picnic form on our trip from the Hollingwood Hub when 11 members and one excited partner passed through the locks with our friendly volunteers. Via a tunnel we passed below Staveley, where we walked round the new canal basin and locks which swallowed all their funds due to an expected HS2 line. Our rainy return journey didn't dampen what had been a really enjoyable experience.

Our historic Buxton experience in August was fascinating, with our knowledgeable Guide throwing a new factual light on buildings we hadn't examined before, and again we were treated to a superb lunch, this time at the beautiful setting of the Cavendish Golf Club, an afternoon tea of generous proportions.

Our evening walk on the 24th followed the path to the Lathkil Hotel, where we shared chips and sandwiches, and then a dusky walk back home.

In preparation for our COFFEE MORNING ON 11TH NOVEMBER we're holding some crafting days. Next WI meeting is on Tuesday September 12th at 7.30 at the Village Hall, with Prof Ian Rotherham, who shares his expert knowledge of the environment, conservation, and Owls and other species. New and potential members are always welcome.

*Report by Liz Hickman*

*All photos by Janet Pryor*



### **Trip to the Yorkshire Sculpture Park**

Do you fancy a trip to the Yorkshire Sculpture Park? We're planning an outing on Saturday 14th October with a bus leaving Youlgrave at 8.30am and returning around 5.30pm.

This is open to WI members plus a friend or partner. The cost includes lunch and depends on how many people are interested.

Please email Val Smith at [valmarkssmith@gmail.com](mailto:valmarkssmith@gmail.com) by 12th September to secure a place.

## THE IOLA PLAYERS

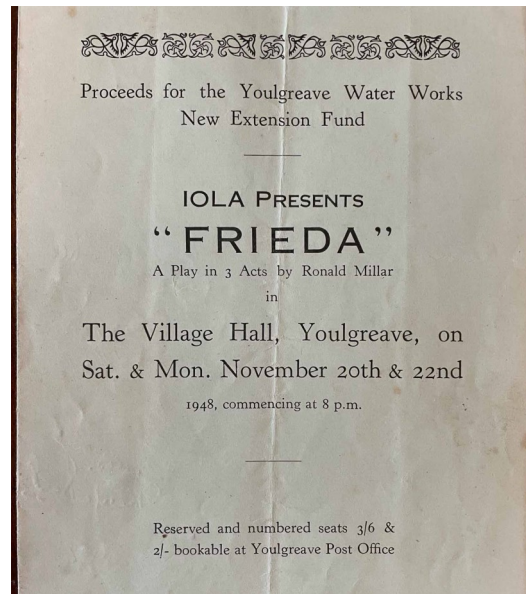
In the late 1940s and into the mid 1950s, Bernard Evans produced a series of plays which were performed by an amateur dramatic company under the name of Iola in Youlgrave Village Hall.

Bernard Evans (1910-1979) was a Youlgrave man who ran a Gentleman's Outfitters on Dale Road Matlock from post World War 2 until his death. He lived in Youlgrave during this period with his sister Betty in St Vincents on Conksbury Lane.

Iola has Greek origins meaning "violet or beautiful lady" and in Greek Mythology Iola was a princess, beautiful daughter of a Greek king, at one time promised in marriage to the Greek hero Heracles (Hercules). Where Bernard derived the name of his company is unknown.

Mrs Barbara Boden of Dove Cottage, Moor Lane, kindly donated 19 programmes of productions from this period. She was in the box office for many of these plays and many of the programmes are signed by members of the cast and backstage staff. This number of productions in the time period indicates that in some years two plays were staged. The programmes form part of Youlgrave History Group's Archive Collection.

Photo 1 (above) shows the programme for "Frieda" by Ronald Miller, performed in November 1948. Note that the proceeds were for the "Youlgrave Water Works



*The programme for the production of 'Frieda'.*

New Extension Fund". Do any readers know what this work entailed?

Photo 2 (next page) shows the cast list for "Acacia Avenue" by Mabel and Denis Constanduros (date not recorded). Note the advert for Kay's Hairdressers of Church Street. Any readers know where this was based?

Photo 3 (left) shows the backstage staff for "The Paragon" by Roland and Michael Pertwee performed in December 1953.

Stage Director	...	John Kent
Stage Manager	...	George Flood
Electrician	..	George Ollerenshaw
Property Mistress	...	Mary Hiden
Hon. Treasurer	...	Harold Bacon
Hon. Secretary	...	Jean Woodhead
Hon. Booking Secretary		Marjorie Keyworth

*Backstage staff for 'The Paragon',*

Many names will be familiar and many have relatives still living in the village:

**Doris Lees** - teacher at Youlgrave Infant School and wife to Harold Lees. Headmaster of Youlgrave School 1931-1963.

**Norman Wilson OBE** - husband of Jan Wilson, long time producer of Youlgrave Pantomime.

**Betty Wilson** - Is that Norman's mother, Jan?

**James Birds** - for many years Youlgrave Pantomime Dame.

**Marjorie Stoker** - wife of Dr Desmond Stoker GP in the Youlgrave and Winster practice.

**Bernard Hadfield** - Father of the late Peter Hadfield.

**John Kent** - became producer of the Holywell Players.

**George Flood** - grandfather of Ian Ollerenshaw.

**George Ollerenshaw** - grandfather of "David George" hairdresser in Bakewell.

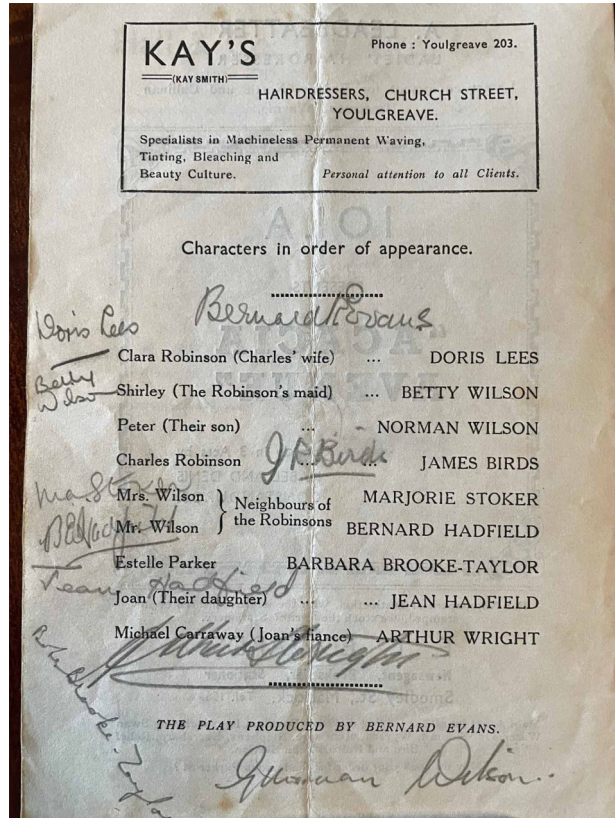
**Harold Bacon** - great uncle of Helen Knight (Secretary of Youlgrave History Group).

Other familiar names not featured in the photos are:-

**Ted Smith** - uncle of Philip Smith

**Jack Rowland** of Reinstor Lodge

**Pamela Marsden**- later Proctor of New Road



Cast list for 'Acacia Avenue'.

Chris Shimwell, Youlgrave History Group, June 2023

This article should have appeared in the previous issue alongside the images, but due to an editorial blunder was omitted. Apologies to Mrs Boden, Chris and the History Group. *Editor*





## **YOULGRAVE CINEMA OPENS FOR THE NEW SEASON ON FRIDAY, 8th SEPTEMBER**

**So, on Friday, 8th September we'll be  
showing "Allelujah".**

### **Dates for your diary:**

Friday, 13<sup>th</sup> October "Champions"

Friday, 3<sup>rd</sup> November "Living"

Friday, 1<sup>st</sup> December "Lunana, Yak in the Classroom"

Friday, 12 January "Till"

Friday, 9<sup>th</sup> February "Close"

### **All welcome**

Payment on the night is £5 per film. Each film will be advertised on posters around the village and at the showing of the previous film. If you'd like to go on an email reminder list, phone 636477.

**We look forward to seeing you  
on the 15<sup>th</sup>**





## **Youlgrave Cinema 2023**

presents



**Friday 8th September 2023, 7.30pm**  
**Youlgrave Village Hall.**

Tickets £5 (please bring correct change if possible). No membership required - open to all. If you prefer to book a seat please ring Glenys on 636477. Reserved seats must be occupied by 7.20pm on the night as remaining tickets will be sold on the door at this time.

When the geriatric ward in a small Yorkshire hospital is threatened with closure, it fights back by galvanizing the local community. The hospital invites a news crew to film the preparations for a concert honouring its most distinguished nurse.

Directed by Richard Eyre and written by Heidi Thomas. It is based on Alan Bennett's play of the same name. The film stars Jennifer Saunders, Bally Gill, Russell Tovey, David Bradley, Derek Jacobi, and Judi Dench.

Cert. 12A

## **A little bit of help would be nice, and really appreciated**



When you're helping to run something in the Village, it's nice if you're doing it with people you get on with, who're interested and committed to whatever it is, and who're happy to do jobs when they need doing.

The Reading Room's been lucky, over the years, to have had people who enjoyed doing whatever was necessary to keep

the room running happily and in a decent state. The committee has shrunk over the years, 3 of us now, but luckily, the work isn't huge and we can always find people to help out when needed, eg for the Grand Sale.

Sadly, we're about to become 2, as our current Treasurer and doer of odd jobs, Tony Barrett, has decided to move on, and he's going to be greatly missed. And we DO wish him well in his adventure.

So we could do with finding a new doer of odd jobs - nothing huge, as we bring in professionals when necessary. And someone to look after the cash would be great - again, it's not a big job. If you think you might be able to help out a bit, I'd love to hear from you, 636477 or [glenysannmoore@googlemail.com](mailto:glenysannmoore@googlemail.com).

### **LOCAL COMMUNITY GROUPS & ORGANISATIONS – SPONSORS**

**Bradford River Action Group**, water management & sustainability in the Bradford valley, 636189  
[www.riverintime.org.uk](http://www.riverintime.org.uk)

**Granby House**, Housing for older people, 636836 [www.granbyhouse.org](http://www.granbyhouse.org)

**Middleton & Smerrill Parish Council**  
636151  
[parishclerk@middletonbyyoulgrave.org.uk](mailto:parishclerk@middletonbyyoulgrave.org.uk)  
[www.middletonbyyoulgrave.org.uk/parish-council](http://www.middletonbyyoulgrave.org.uk/parish-council)

**Middleton by Youlgrave Village Hall**  
636532  
[villagehall@middletonbyyoulgrave.org.uk](mailto:villagehall@middletonbyyoulgrave.org.uk)

**Youlgrave Bellringers**, 636576

**Youlgrave Bowls Club**, contact Ken Clayton, 630005, [kenclayton@mail.com](mailto:kenclayton@mail.com)

**Youlgrave Cinema**, 636836

**Youlgrave Community Land Trust**, 636886  
[www.youlgravecommunitylandtrust.org](http://www.youlgravecommunitylandtrust.org)

**Youlgrave History Group**, contact [yhgenquiries2@gmail.com](mailto:yhgenquiries2@gmail.com)

**Youlgrave Methodist Church**, 636558

**Youlgrave Parish Church**, 636576

**Youlgrave Parish Council**, 636151  
[www.youlgrave.org.uk/youlgrave-parish-council](http://www.youlgrave.org.uk/youlgrave-parish-council)

[youlgraveclerk@youlgrave.org.uk](mailto:youlgraveclerk@youlgrave.org.uk)

**Youlgrave Preschool**, 07494 522615  
[enquiries@youlgravepreschool.org](mailto:enquiries@youlgravepreschool.org)  
[www.youlgravepreschool.org/](http://www.youlgravepreschool.org/)

**Youlgrave Reading Room**, 636477

**Youlgrave Scout & Community Youth Hall**, 636887

**Youlgrave Silver Band**, Thurs 7.30pm  
Methodist Hall, Learners 7pm, 07734 714227 [www.youlgravesilverband.com](http://www.youlgravesilverband.com)

**Youlgrave Village Hall**,  
[enquiries@yvh.org.uk](mailto:enquiries@yvh.org.uk), [www.yvh.org.uk](http://www.yvh.org.uk)

**Youlgrave Welldressers**, 07899 920204

[www.youlgravewelldressers.co.uk/](http://www.youlgravewelldressers.co.uk/)

**Youlgrave Wesleyan Reform Chapel**, 636251

**Youlgrave Women's Institute**, 07377 586330

**Youlgrave Waterworks Ltd**  
James Bacon (leaks) 07866 365610  
Admin matters: 01629 636151  
[waterworks@youlgrave.org.uk](mailto:waterworks@youlgrave.org.uk)

*For more information on local organisations, businesses and services go to:*

**[www.youlgrave.org.uk](http://www.youlgrave.org.uk) and [www.middletonbyyoulgrave.org.uk](http://www.middletonbyyoulgrave.org.uk)**

Also see:

- **Derbyshire County Council** (roads, schools & education, libraries, social care, Trusted Trader) 01629 533190 [www.derbyshire.gov.uk](http://www.derbyshire.gov.uk)
- **Derbyshire Dales District Council** (Council Tax, bins, street cleaning, elections, energy advice) 01629 761100 [www.derbyshiredales.gov.uk](http://www.derbyshiredales.gov.uk)
- **Peak District National Park Authority** (planning, conservation & land management advice) 01629 816200 [www.peakdistrict.gov.uk](http://www.peakdistrict.gov.uk)
- **Hulleys** (local bus services) [www.hulleys-of-baslow.co.uk](http://www.hulleys-of-baslow.co.uk)
- **Bakewell & Eyam Community Transport** (health journeys, group travel, trips) [www.bect.org.uk](http://www.bect.org.uk) 01629 641920

## **ANNUAL SPONSORS: BUSINESSES & TRADERS/PROFESSIONALS**

### **Pubs & Accommodation**

**Apple Tree Cottage** 1 double bedroom self-catering, accommodation on Main Street, Youlgrave [www.holidaylettings.co.uk/rentals/youlgreave/271801](http://www.holidaylettings.co.uk/rentals/youlgreave/271801)

**Bull's Head Hotel** 636307 [bullsheadyoulgrave@gmail.com](mailto:bullsheadyoulgrave@gmail.com)  
[www.thebullsheadyoulgrave.co.uk/](http://www.thebullsheadyoulgrave.co.uk/)

**Farmyard Inn** 636221 [joinus@farmyardinnyoulgreave.co.uk](mailto:joinus@farmyardinnyoulgreave.co.uk)  
[www.farmyardinnyoulgreave.co.uk/](http://www.farmyardinnyoulgreave.co.uk/)

**Hopping Farm Caravan Site**, Mrs M. Frost, 636302

**The Old Bakery** B&B and self-catering accommodation, Church Street, Youlgrave 630005, [kenclayton@mail.com](mailto:kenclayton@mail.com) [www.theoldbakeryyoulgreave.co.uk/](http://www.theoldbakeryyoulgreave.co.uk/)

**Peak Pods** En-suite glamping pods, Alport, 636874, [www.peakpods.com](http://www.peakpods.com)

### **Shops, Cafes & Home Delivery**

**Amy's Dairy** Fresh glass bottled milk & orange juice, free range eggs, cream and yogurts, 636639 & 07799 880740

**Peak Feast** Bakers of delicious cakes, pies and treats, The Workshop, Moor Lane, 630000, [www.peakfeast.co.uk](http://www.peakfeast.co.uk)

**Youlgrave Village Shop** Well-stocked convenience store, hot and cold takeaway food, including breakfasts, 630208

**Youngs of Youlgrave** Post Office & Village Store, newspapers, magazines, cards, stationery & groceries, plus free cash withdrawals and deposits, 636217

**Fountain View Bakery**, artisan bakers of bread, cakes & pastries baked on site, and served in our newly renovated café + Dark Woods speciality coffee with over 70 Great Taste Awards.

### **Building and Interior Services & Supplies**

**Michael Arthur** Supply, design and project manage installations of kitchens, bedrooms and bathrooms, 01629 258090 [www.michaelarthur.co.uk](http://www.michaelarthur.co.uk)

**Goodwins** Design, supply and project managed installations of kitchens, bedrooms and bathrooms, 01629 258500 [michael@goodwinskbb.co.uk](mailto:michael@goodwinskbb.co.uk)

**Derbyshire Aggregates** 636500 [www.decorativeaggregates.com](http://www.decorativeaggregates.com)

**Long Rake Spar**, large selection of decorative stone for all your garden projects, 636210 [www.longrakespar.co.uk](http://www.longrakespar.co.uk)

**Marsh Brothers Engineering Services**, bespoke repair, renovation and replacement of cast and wrought iron components (gates, railings, etc), 636532, [info@marshbrothers.co.uk](mailto:info@marshbrothers.co.uk)

**T. Nutt & Sons** Supply and fit carpets, vinyl, wood, laminate and karndean, 01246 863148, [www.nutt.co.uk](http://www.nutt.co.uk)

### **Other Local Services**

**Jo Copeland**, mobile professional hairdresser, precision colouring, perming & styling 07711 255004

**Kathi Roche**, Woodwind instrument repairs 636179, [kathirepairs@hotmail.co.uk](mailto:kathirepairs@hotmail.co.uk)

**Phil Smith**, mosaic artist, large or small, outdoor work, 630018, [grouchygrouter@btinternet.com](mailto:grouchygrouter@btinternet.com) [www.grouchygrouter.co.uk](http://www.grouchygrouter.co.uk)

**Youlgrave Garage**, Motor engineers and MOT Test Station, 636943

**Judith Orchard**, Beekeeping & collecting swarms / Sewing repairs & alterations, 07734 714227